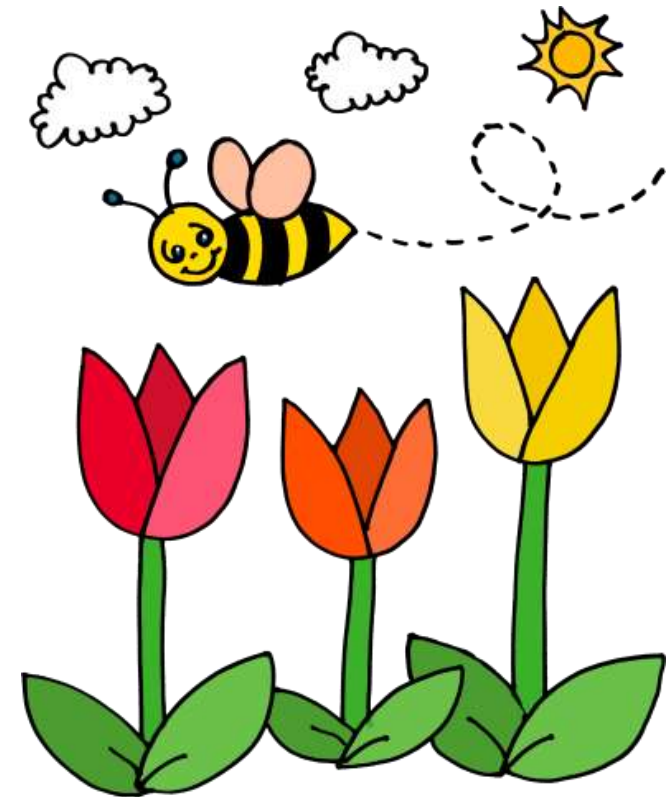


**Prepared by  
The Wiltshire & Bath  
Independent Living Centre**

**Reg. Charity 1000659**

## **Do You Dream of a Day Out?**



**19<sup>th</sup> Edition  
Spring 2019**



**A guide to access  
and facilities for  
older & disabled people.**

This is the 19<sup>th</sup> edition of the “Days Out” Booklet which we have been able to produce.

Further copies can be obtained from us at  
The Independent Living Centre, Semington BA14 6JQ.

We have recently contacted all of the locations listed to ensure the booklet is up to date. If you have visited somewhere you feel should be included why not let us know by telephoning 01380 871007.

Unfortunately, we are unable to corroborate the information in the booklet, so if you are planning a visit and have specific requirements, or need to know what type of path surfaces are provided, we do urge you to ring the phone number shown to ensure your needs can be met.

There are 8 new entries in this year’s booklet, offering an even wider range of entertainment to enjoy.



So go ahead and have a great  
“DAY OUT”

From all the Team at  
The Independent Living Centre



## **WILTSHIRE & BATH INDEPENDENT LIVING CENTRE**

YOUR LOCAL CENTRE OF EXCELLENCE

The Wiltshire & Bath Independent Living Centre provides impartial advice to elderly and disabled people, offering practical solutions for easier living. You can view and try a wide range of products alongside an Occupational Therapist, receive information by post or visit our website [www.ilc.org.uk](http://www.ilc.org.uk) for further information.

We can also provide information about equipment hire/loan, Benefit entitlement, holidays etc. for you, a friend or client.

If we are unable to answer your query directly we will signpost you to the relevant service.

Or make a weekday appointment to visit us,  
This must be arranged in advance.

**Call us on 01380 871007**

Car Parking	House & Garden Access	Refreshments & Accessible Toilets	Equipment for Hire & other Information
<b>American Museum, Claverton Manor, Bath BA2 7BD</b> T: 01225 460503 <a href="http://www.americanmuseum.org">www.americanmuseum.org</a>			
Disabled parking is outside the house.  Blue badge parking.  A golf buggy for transport is available.	Museum is accessible using the lift & ramps.  The grounds and play area are partly accessible with some slopes	Accessible light lunches and teas.  Accessible toilets are in the Gallery Shop and Coach House.	Wheelchairs for loan. Mobility scooters are not allowed.  Assistance dogs are welcome.  Free entry for one helper.
Open: Open March–October from 12 noon–5pm Tuesday–Sunday. Cafe and Gardens open from 10:30am. Closed Mondays (except Bank Holiday Mondays and in August) See website or phone for “Christmas Season”			

Car Parking	House & Garden Access	Refreshments & Accessible Toilets	Equipment for Hire & other Information
<b>Avebury Manor House – Alexander Keiller Museum &amp; Barn Gallery, Avebury, Nr Marlborough SN8 1RF</b> T: 01672 539250 <a href="http://www.nationaltrust.org.uk">www.nationaltrust.org.uk</a>			
Disabled parking is 200 yards from the house.  Drop off point.	Museum galleries and Manor garden are accessible with ramped entrances.  The stone circle is only partly accessible due to terrain.	Restaurant in the farmyard – level entrance.  Shop level entrance.  Accessible toilets behind the barn gallery.	Wheelchair for hire.  Large print and Braille guides.  Assistance dogs allowed in the Museum and barn gallery.
Manor House closed during summer solstice in June. Winter closing times 4pm or dusk if earlier. Check website or phone for further opening times.			

Car Parking	House & Garden Access	Refreshments & Accessible Toilets	Equipment for Hire & other Information
<b>Bowood House &amp; Gardens, Calne SN11 0LZ</b> T: 01249 812102 <a href="http://www.bowood.org">www.bowood.org</a>			
At the front of the Hotel and outside the Courtyard.	A slope at entry. Fully accessible ground floor. A recorded tour is available for upper floors.  Remote grounds are uneven and sloping – not wheelchair accessible.  Seats and rails are provided.	The restaurant, bar and coffee shop on arrival are all accessible.  Accessible toilets are in Reception on the ground floor.	Manual wheelchairs – advisable to book in advance.  Assistance dogs are welcome.  Braille tours are available.  Concession rates available.
Open: End March–End October 11.00am–5.30pm (grounds open until 6pm) Closing times 1 hour earlier after clocks change.			

Car Parking	House & Garden Access	Refreshments & Accessible Toilets	Equipment for Hire & other Information
<b>Cholderton Rare Breed Farm Park, Cholderton, Salisbury SP4 0EW</b> T: 01980 629438 <a href="http://www.choldertoncharliesfarm.com">www.choldertoncharliesfarm.com</a>			
Free parking.	Most of the park is accessible.  Picnic areas in the garden - undercover area also accessible.	Ramp to the Café in the farm house.  A specially adapted toilet is available.	Wheelchair NO LONGER available to hire.  Dogs are allowed in the park on a lead.  Concession rates available.
Open: 7 days a week 10.00am–4.00pm Closed: Christmas & Boxing day, New Years Eve & New Years Day.			

Car Parking	House & Garden Access	Refreshments & Accessible Toilets	Equipment for Hire & other Information
<b>Clarks Shopping Village, Street, Somerset BA16 0BB</b> T: 01458 840064 <a href="http://www.clarksvillage.co.uk">www.clarksvillage.co.uk</a>			
There are 4 nearby car parks with disabled bays.	Accessible footpaths & most shops are wheelchair accessible.	Total of 9 cafes, takeaways and coffee shops.  4 toilet blocks all with accessible facilities.	Shopmobility Scheme from The Grange car park. Pre-arrival form available to complete online.
Open: All year, closed Christmas and Boxing Day. Late night shopping until 8pm on Thursday.			

Car Parking	House & Garden Access	Refreshments & Accessible Toilets	Equipment for Hire & other Information
<b>Corsham Court, Corsham, Wilts SN13 0BZ</b> T: 01249 712214 <a href="http://www.corsham-court.co.uk">www.corsham-court.co.uk</a>			
In the Church square.  Disabled people can drive to the front of house for directions to parking facilities.	Platform lift to the state rooms.  Motorised wheelchairs are not permitted in the house.  All garden areas are on one level.	No refreshments available.  Accessible toilets are in the gardens.	1 manual wheelchair available.  Free garden access for one wheelchair user and one carer.  Charges for the house.  Dogs allowed in the garden only.
Open: Summer; Late March–late September 2.00pm–5.30pm. Closed Mondays & Fridays but open Bank Holidays. Winter: October–mid March weekends only 2.00pm–4.30pm. Closed in December. Open to groups by appointment throughout the year by prior appointment.			

Car Parking	House & Garden Access	Refreshments & Accessible Toilets	Equipment for Hire & other Information
<b>D-Day Museum and Overlord Embroidery, Portsmouth PO5 3NT</b> T: 023 9282 7261 <a href="http://www.ddaymuseum.co.uk">www.ddaymuseum.co.uk</a>			
Disabled parking is available.  Dropping off outside museum is possible upon request.	All on one level so fully accessible for those with mobility difficulties and wheelchair users.	May–Sept, light lunch & snacks, hot and cold drinks.  Accessible toilets are near to reception.	Wheelchairs–must pre book.  Induction loops and audio-visual in reception and theatre.  Free admission and lowered counters for wheelchair users & carers.  Assistance dogs allowed.
Open: Open daily. April–Sept 10.00–5.30pm; Oct–March 10.00–5.00pm Closed 24 <sup>th</sup> – 26 <sup>th</sup> December.			

Car Parking	House & Garden Access	Refreshments & Accessible Toilets	Equipment for Hire & other Information
<b>Dyrham Park, Nr. Chippenham, Wilts SN14 8ER</b> T: 0117 937 2501 <a href="http://www.nationaltrust.org.uk">www.nationaltrust.org.uk</a>			
In the main car park – 5 min walk.  Free shuttle bus.	11 steps to entrance with alternative house access.  Accessible route on ground floor.  Steep slopes & uneven floor.	Refreshments & shop with ramped entrance.  Accessible toilets are in the car park and the courtyard near to the house.	Braille & large print guides.  Free wheelchair hire. Scooters not permitted.  Dogs allowed in walking area at main car park.
Open: House – Mid March – end Oct 12.00 noon – 5.00pm. Gardens - Mid March–start Jan 11.00am–5.00pm, Closed Christmas Day.			

Car Parking	House & Garden Access	Refreshments & Accessible Toilets	Equipment for Hire & other Information
<b>East Somerset Railway, Cranmore, Shepton Mallet BA4 4QP</b> T: 01749 880417 <a href="http://www.eastsomersetrailway.com">www.eastsomersetrailway.com</a>			
6 space in car park adjacent to main railway building – entrance 50m.  Drop off point is available.	Wheelchair ramp for the train.  There are steps and a disabled pathway but with a steep slope.  One adapted carriage via ramp.	Main meals available only on days the trains are operating.  Accessible toilets in main railway building.  Restaurant at car park level.  Shop on platform level.	Wheelchair to hire.  Assistance dogs only.
Open: See website or phone, as times vary.			

Car Parking	House & Garden Access	Refreshments & Accessible Toilets	Equipment for Hire & other Information
<b>Exbury Gardens and Steam Railway, Nr Beaulieu, Hants SO45 1AZ</b> T: 023 8089 1203 <a href="http://www.exbury.co.uk">www.exbury.co.uk</a>			
Disabled spaces at the front of the main car park at the entrance.	Motorised scooters are welcome on recommended pathways.  Gardens are accessible with some slopes and many seats.  Steam train with adapted carriage.	Restaurant, tea rooms, gift shop, plant centre and gallery accessible.  2 accessible toilets situated at entrance.	Wheelchairs to loan.  Free entry for carers.  Wheelchair access maps.  Chauffeured tours.  Assistance dogs allowed.
Open: Daily Mid March – November 10am – 6.00pm (or dusk if earlier)			

Car Parking	House & Garden Access	Refreshments & Accessible Toilets	Equipment for Hire & other Information
<b>Fleet Air Arm Museum, RNAS Ilchester, Somerset BA22 8HT</b> T: 01935 840565 <a href="http://www.fleetairarm.com">www.fleetairarm.com</a>			
15 yards to entrance.	Ground level entrance.  95% access to museum. Restricted access: Fuselage of Concorde, Brush with War Gallery, and Merlin Exhibition.  Indoor lift.	Swordfish Restaurant in grounds.  Warnefords summer cafe & Picnic area.  Seats in the summer outside the restaurant.  Easy access toilets.	Manual wheelchairs T:01935 842600  Assistance dogs are permitted.  Induction loops.  Pre-bookable guides for sight impaired visitors. Audio info points to pre-arrange.
Open: April–Oct 10.00am–5.30pm, Nov–April 10.00am–4.30pm Closed: Mondays & Tuesdays and 24 <sup>th</sup> –26 <sup>th</sup> December.			

Car Parking	House & Garden Access	Refreshments & Accessible Toilets	Equipment for Hire & other Information
<b>Forde Abbey and Gardens, Chard, Somerset TA20 4LU</b> T: 01460 220231 <a href="http://www.fordeabbey.co.uk">www.fordeabbey.co.uk</a>			
Disabled parking 10m from the entrance.  Accessible drop off point 50m from entrance.	Entrance can be widened.  Upstairs is not accessible- slide show available.  Gardens mostly accessible with resting chairs inside and out.	Accessible Tea Rooms.  Accessible toilets available.	Free entry for wheelchair users or those registered blind.  Wheelchair & scooter hire £2.  Large print info. No hearing loop. Dogs on leads.
Open: Gardens - All year 10am–5:30pm House – May-October 12-4pm. Closed Sat and Mon (except Bank Hols)			

Car Parking	House & Garden Access	Refreshments & Accessible Toilets	Equipment for Hire & other Information
<b>Glastonbury Abbey, Glastonbury BA6 9EL</b> T: 01458 832267 <a href="http://www.glastonburyabbey.com">www.glastonburyabbey.com</a>			
No car park on site.  Nearest car park is St Dunstons.  One blue badge space available. Those with mobility passes can park in any space for free.	Wheelchair accessible.  The office, shop & museum are ramped.  Lady Chapel is wheelchair accessible. 95% grounds are also accessible by gravel & dust paths.	Wheelchair accessible outdoor café May – Sept.  Accessible toilet	Manual Wheelchairs.  Large print map.  Audio tapes & fingertip guide.  Hearing loops in ticket office & shop.  Braille guided tour.  Dogs on leads.
Open: Every day except Christmas day. Nov-Feb 9am-4pm, March-May&Sept-Oct 9am-6pm, June-Aug 9am-8pm			

Car Parking	House & Garden Access	Refreshments & Accessible Toilets	Equipment for Hire & other Information
<b>Sir Harold Hillier Gardens, Nr. Romsey Hampshire SO51 0QA</b> T: 01794 369317/318 <a href="http://www.hilliergardens.org.uk">www.hilliergardens.org.uk</a>			
Accessible parking is at the front of the pavilion & in the closest visitor car park.	Most areas are accessible.  The all-ability paths allow access to the gardens.  Seating around the garden.	Refreshments, light meals and accessible toilets available in the Pavilion and Jermyn's house.	Free wheelchair hire to be booked in advance.  Concession rates available.  Guide dogs allowed.
Open: April - October 10.00am – 6.00pm, Nov - March 10.00 – 5.00pm. Closed Christmas & Boxing Day.			

Car Parking	House & Garden Access	Refreshments & Accessible Toilets	Equipment for Hire & other Information
<b>The Jane Austen Centre, 40 Gay St, Bath BA1 2NT</b> T: 01225 443000 <a href="http://www.janeausten.co.uk">www.janeausten.co.uk</a>			
A short walk from Charlotte Street Car park, 100m.	The ground floor exhibition is accessible.  Ramps are available.  The basement is not easily accessible for those with walking difficulties.	Tea Rooms are on the second floor - no lift.  Accessible shop.  Toilet not easily accessible.  Nearest accessible toilet is at Charlotte St Car park. 100m.	Assistance dogs only.  Free audio tour  Large text interpretation boards  Touch objects not cased.
Open: Daily from 10am-5:30pm Closed: 24 <sup>th</sup> – 26 <sup>th</sup> December & 1 <sup>st</sup> January.			

Car Parking	House & Garden Access	Refreshments & Accessible Toilets	Equipment for Hire & other Information
<b>Cotswold Country Park, Shorncliffe, Cirencester GL7 6DF</b> T: 01285 868096 <a href="http://www.cotswoldcountrypark.co.uk">www.cotswoldcountrypark.co.uk</a>			
Parking adjacent to the facilities.  Disabled parking available – speak to staff on arrival.	Ramps to shop and information point in the Visitor Centre.  Picnic & BBQ sites with tables for wheelchair users.	Available in the Visitor Centre. Lakeside Café is accessible – summer only.  Accessible toilets are next to main entrance and near main beach.	All dogs allowed.
Open: Check website or phone for opening times, as often vary.			

Car Parking	House & Garden Access	Refreshments & Accessible Toilets	Equipment for Hire & other Information
<b>Lackham Countryside Centre, Lacock, Chippenham SN15 2NY</b> T: 01249 466866 <span style="float: right;"><a href="http://www.lackham.co.uk">www.lackham.co.uk</a></span>			
Parking near the house and the car park by the Avon Centre.	Accessible. The House has steps and a ramp is available.  Wide path in the garden. Raised flower beds and sensory garden.  Lift available in house.	Coffee shop and Garden restaurant are accessible by use of ramp.  Accessible toilets are in the Main House, Avon Centre and walled garden.	Touch areas with seating and handrails.  Dogs are permitted.  Portable loop hearing assistance system.
Open: Easter – August on Sundays and Bank Holiday Mondays. Daily throughout August 10.00am – 5.00pm			

Car Parking	House & Garden Access	Refreshments & Accessible Toilets	Equipment for Hire & other Information
<b>The Larmer Tree Gardens, Salisbury SP5 5PT</b> T: 01725 516971 <span style="float: right;"><a href="http://www.larmertree.co.uk">www.larmertree.co.uk</a></span>			
Main car park, cars can be parked by the Pavilion entrance.	Yes, all accessible using gravel paths.	Tea room in the Pavilion.  Accessible toilets at the Coffee Grove Café.	Wheelchair loan.  Guide dogs welcome.  Tour guides can be arranged in advance.
Open: April-October 11am-4:30pm Sun-Thurs Closed: Fri & Sat. Check online or phone before visiting, as sometimes closed for events on other days.			

Car Parking	House & Garden Access	Refreshments & Accessible Toilets	Equipment for Hire & other Information
<b>Lacock Abbey, Lacock, Chippenham SN15 2LG</b> T: 01249 730459 <span style="float: right;"><a href="http://www.nationaltrust.org.uk">www.nationaltrust.org.uk</a></span>			
Disabled parking 100 yards in the Abbey Courtyard & Red Lion car park.	Abbey has difficult steps; a photo album is in the Cloisters which are accessible by a ramp.  The Grounds are largely accessible on gravel paths, with seats.	Stable Tea Room at the Red Lion car park.  Accessible toilets are at the Abbey entrance and Red Lion car park.  RADAR key from the Tea rooms.	Wheelchairs to loan & one single PMV.  Guide dogs only.  Audio, Braille and large print guides.  Accessible route map.  Induction loop in the shop.
Open: Opening times vary – see website or phone for more information.			

Car Parking	House & Garden Access	Refreshments & Accessible Toilets	Equipment for Hire & other Information
<b>Lacock Fox Talbot Museum, Lacock, Chippenham SN15 2LG</b> T: 01249 730459 <span style="float: right;"><a href="http://www.nationaltrust.org.uk">www.nationaltrust.org.uk</a></span>			
Red Lion car park across the road.	A lift is available.	The Stable Tea Room in the Red Lion car park.  Accessible toilets are in the Red Lion car park.	Guide dogs only.  Group guided tours for visually impaired – need to book in advance.
Open: Opening times vary – see website or phone for more information.			

Car Parking	House & Garden Access	Refreshments & Accessible Toilets	Equipment for Hire & other Information
<b>Living Coasts, Beacon Quay, Torquay TQ1 2BG</b> T: 0844 474 3366 <a href="http://www.livingcoasts.org.uk">www.livingcoasts.org.uk</a>			
Beacon Quay Council car park, adjacent, 3 disabled spaces on top deck with direct access to the café.	Wheelchair accessible throughout the entire site: timber & concrete flooring.  Lift available	Accessible water-side Café; linking to the shop.  Accessible toilets next to the shop, in the entrance hall and at the Café on the first floor.	Wheelchair loan.  Assistance dogs are allowed.  Guided tours for the visually impaired. 01803 202470  Special needs groups. 01803 697569
Open: Every day except Christmas Day 10.00am – 4.00pm.			

Car Parking	House & Garden Access	Refreshments & Accessible Toilets	Equipment for Hire & other Information
<b>Longleat, Warminster, Wiltshire BA12 7NW</b> T: 01985 844400 <a href="http://www.longleat.co.uk">www.longleat.co.uk</a>			
Disabled parking in the main car park.	Wheelchair Access to the House via the Victoria kitchens. A lift to all floors.  A maximum of 4 wheelchairs in the house at one time.  Room for one wheelchair on Jungle Express.	The Wessex Pavilion and Picnic area. The Cellar Café.  Accessible toilets at the watering hole, the Adventure Castle, Bat Cave, Tropical Storm Café & Wessex Pavilion	Wheelchair hire T:01985 844400  Assistance dogs are welcome in all areas except the Safari Park and the Motion Simulator.  Free dog kenneling is available.
Open: Opening times vary – see website or phone for more information.			

Car Parking	House & Garden Access	Refreshments & Accessible Toilets	Equipment for Hire & other Information
<b>Lydiard Park, Lydiard, Tregoze, Swindon SN5 3PA</b> T: 01793 770401 <a href="http://www.lydiardpark.org.uk">www.lydiardpark.org.uk</a>			
A drop off point and parking is available in the courtyard of the house, off Hay Lane.	Wheelchair access to the House, Church & Visitor Centre.  The gardens are mainly level and accessible.	Café in Visitors Centre is accessible.  Accessible toilets at the Visitor Centre, Coach House & Forest café.	Assistance dogs are allowed.  Pre-booked tours for the partially sighted.  Story box audio guides are available.  Tramper available for 2hrs at a time.
Open: The Park–7:30am-dusk every day. Garden–11am-4pm every day. House-11am-4pm Weds-Sun			

Car Parking	House & Garden Access	Refreshments & Accessible Toilets	Equipment for Hire & other Information
<b>Marwell Wildlife, Winchester, Hants SO21 1JH</b> T: 01962 777407 <a href="http://www.marwell.org.uk">www.marwell.org.uk</a>			
Large car park with designated disabled parking.	Marwell Hall is not open to the public.  All areas are wheelchair accessible.  Free road trains with adapted carriage.	Accessible kiosk and shop around the park.  Ample accessible toilets available.  Changing Places toilet. Radar key needed.	Wheelchairs Available.  Concession rates available.  Assistance dogs allowed.  Sensory trail MP3. Hearing loop at Coati talk
Open: All Year - Closed Christmas Day & Boxing Day. Off Peak 10 – 4pm, Standard 10 – 5pm, Peak times 10 -6pm.			



Car Parking	House & Garden Access	Refreshments & Accessible Toilets	Equipment for Hire & other Information
<b>Old Wardour Castle, Tisbury, Nr Shaftsbury, Wilts SP3 6RR</b> T: 01747 870487 <a href="http://www.english-heritage.org.uk">www.english-heritage.org.uk</a>			
2 bays near to entrance, setting down at the entrance gate 20m.	Easier access at rear of castle.  Steps to the Tower & The Pavilion. Ground floor is accessible.  Loose and impacted gravel paths.	Ramped access to shop.  Accessible toilets at the Custodian's kiosk – ask for the key.	Assistance dogs are allowed.  Audio Tour is available.  Handrails.  Tour transcripts.  One induction loop.
Open: Daily April–June & Sept 10am–5pm, July–August 10am–6pm, Nov–March weekends only 10–4pm. Closed over Christmas & New Year.			

Car Parking	House & Garden Access	Refreshments & Accessible Toilets	Equipment for Hire & other Information
<b>Old Sarum Castle, Castle Road, Salisbury, Wilts SP1 3SD</b> T: 01722 335398 <a href="http://www.english-heritage.org.uk">www.english-heritage.org.uk</a>			
Near to entrance.  Pre-booked set down is near to bridge.  One disabled bay.	The monument, outer bailey and grounds are accessible.  Grass slopes, loose gravel and narrow paths.  Steep slope to top viewing point	Ramped access to Shop.  Accessible toilets near the shop via ramp.	Assistance dogs are allowed.  Handrails.  Bench at the top of the bridge.  Induction loop in shop.  Handling can be arranged.
Open: 10am-4pm Nov-March. 2017 times available online.			

Car Parking	House & Garden Access	Refreshments & Accessible Toilets	Equipment for Hire & other Information
<b>Paignton Zoo, Totnes Road, Paignton, Devon TQ4 7RU</b> T: 0844 474 2222 <a href="http://www.paigntonzoo.org.uk">www.paigntonzoo.org.uk</a>			
29 disabled parking spaces and a drop-off point outside the main entrance.  These are mostly on the 1 <sup>st</sup> level, some are on the 2 <sup>nd</sup> level.	The Zoo is mostly accessible with some gradients & some steep hills.  There is plenty of seating.  Best route map is available.	Accessible Island restaurant, kiosk and shop.  Accessible toilets at the main entrance, Restaurant, Play Centre and Avian Centre.	Wheelchair loan and scooters for hire. £20 deposit + £5 for scooter.  Induction loop.  Tours for partially sighted. Assistance dogs welcome.  Special needs groups. 01803 697569
Open: Daily 10am–closing times vary. Closed Christmas Day.			

Car Parking	House & Garden Access	Refreshments & Accessible Toilets	Equipment for Hire & other Information
<b>Paultons Park, Ower, Romsey, Hampshire S051 6AL</b> T: 023 8081 4442 <a href="http://www.paultonspark.co.uk">www.paultonspark.co.uk</a>			
Disabled parking in main car park.	The park grounds & most rides are accessible.  Lakeside Walk has compacted gravel.  The Rio Grande & The Victorian Carousel have a special carriage.	Restaurants and Self-Service Kiosks are all accessible.  Accessible toilets at the main entrance, Wagoner's Restaurant, Rio Grande & Cobra Ride.	Free wheelchair hire.  Free entry for guests with their own wheelchairs  Queue assist available with proof of disability.  Assistance dogs
Open: April–Oct 10am–5.30pm. Nov–March 10.30am-4.30pm.			

Car Parking	House & Garden Access	Refreshments & Accessible Toilets	Equipment for Hire & other Information
<b>Roman Baths, Abbey Churchyard, Bath BA1 1LZ</b> T: 01225 477785 <a href="http://www.romanbaths.co.uk">www.romanbaths.co.uk</a>			
None provided – use facilities in Bath	2 lifts are available making 90% of the site accessible.  Some steps & uneven paving.  Risk of claustrophobia in some areas.	The Restaurant in the Pump Room is accessible.  Accessible toilets at the entrance.	2 wheelchairs & 1 scooter to hire.  Audio guide compatible with T switch, or printed copy of audio guide text.  Sign language headsets.  Free entry for carers.
Open: Times vary – check website or phone for more information. Late evening entry July and August.			

Car Parking	House & Garden Access	Refreshments & Accessible Toilets	Equipment for Hire & other Information
<b>Fashion Museum, Assembly Rooms, Bath, BA1 2QH</b> T: 01225 477789 <a href="http://www.fashionmuseum.co.uk">www.fashionmuseum.co.uk</a>			
100m in Lansdown Road & 80m in Alfred Street.	Museum is on the ground floor – level access.  A lift to the lower ground floor.	Assembly Rooms Cafe on the ground floor.  Accessible toilet on the lower ground floor.	Auto guides are compatible with a T switch.  Audio tour text in large print is available.
Open: All year except Christmas & Boxing Day. March-Oct 10:30-6pm Nov-Feb 10:30-5pm			

Car Parking	House & Garden Access	Refreshments & Accessible Toilets	Equipment for Hire & other Information
<b>Victoria Art Gallery, Bridge Street, Bath, BA2 4AT</b> T: 01225 477233 <a href="http://www.victoriagal.org.uk">www.victoriagal.org.uk</a>			
Use Bath car parks.  Blue Badge spaces on Bridge Street.	Automatic door.  Ground & 1 <sup>st</sup> floor accessible by ramp at the entrance.  A lift is available.	Drinks machine in lounge area on 1 <sup>st</sup> floor.  Adapted toilet on the 1 <sup>st</sup> floor.	A sign language interpreter on advance request  Activities can be pre-arranged for disabled groups.  Shopmobility 01225 481744
Open: Tues–Sat 10am–5pm, Sun 13.30–5pm. Closed: Mondays			

Car Parking	House & Garden Access	Refreshments & Accessible Toilets	Equipment for Hire & other Information
<b>STEAM - Museum of the Great Western Railway, Swindon SN2 2TA</b> T: 01793 466646 <a href="http://www.steam-museum.org.uk">www.steam-museum.org.uk</a>			
Disabled parking is near to entrance, drop off possible.	Fully accessible with ramps and lifts to access all display areas.  Low level counters at Ticket Desk, shop & café.	Lift to an accessible Café on first floor.  Accessible toilets on the ground floor next to ticket desk with a call point.  Adult changing room.	Wheelchairs & scooter to hire.  Video & large print info panels.  Concession rates.  Personal guide – pre-book.  Induction loop.  Assistance dogs
Open: 10am-5pm daily. Closed over Christmas and New Year.			

Car Parking	House & Garden Access	Refreshments & Accessible Toilets	Equipment for Hire & other Information
<b>Salisbury Cathedral, Salisbury Wiltshire SP1 2EJ</b> T: 01722 555120 <a href="http://www.salisburycathedral.org.uk">www.salisburycathedral.org.uk</a>			
Disabled parking bays in The Close.	The Cathedral floor, Chapter House & Cloisters are accessible.  Tower not easily accessible.	Refectory Restaurant and Ladywell Kiosk are accessible.  Accessible toilets.	3 wheelchairs available to hire.  Assistance dogs welcome.  Touch and feel.  Large print leaflet & Induction loop.  Shop mobility 01722 328068
Open: Shop/Restaurant April-Oct 9.30am-4.30pm, Nov-March 10am-5pm. Cathedral/Chapter House 12noon-4pm. Times can vary, please check.			

Car Parking	House & Garden Access	Refreshments & Accessible Toilets	Equipment for Hire & other Information
<b>Stourhead, Stourton, Warminster BA12 6QF</b> T: 01747 841152 <a href="http://www.nationaltrust.org.uk">www.nationaltrust.org.uk</a>			
Visitor Centre & Spread Eagle car parks.  Wheelchair accessible transfer.  A 6 seater buggy is available.  Shuttle bus in main season.	13 steps to the entrance.  All showrooms are level access.  Accessible map route for gardens.  Gravel paths, some steep slopes.	Spread Eagle Courtyard & Restaurant accessible. Shop level access.  Accessible toilets at Visitor Reception, Spread Eagle Courtyard and Restaurant.	Wheelchairs, Scooters & stair climber for hire.  Braille and large print guides.  Induction loop and portable loop for guided tours.  Sensory Experience.
Open: Gardens open all year. House open March-Nov. Tower opens 12-4 school hols and weekends. Closed Winter.			

Car Parking	House & Garden Access	Refreshments & Accessible Toilets	Equipment for Hire & other Information
<b>Stonehenge, Salisbury Wiltshire SP4 7DE</b> T: 0870 333 1181 <a href="http://www.english-heritage.org.uk/stonehenge">www.english-heritage.org.uk/stonehenge</a>			
22 disabled bays.  Accessible shuttle bus.	The Visitor Centre & stone circle are accessible by tarmac & grass.  Limited seating at the stones.	Café and accessible toilets.  Emergency only toilet near stones.  Adult changing.	Wheelchair loan.  Induction Loop  Large print guides, transcripts & Tactile objects  Assistance dogs
Open: All year round. Tickets issued in time slots, so best to pre-book.			

Car Parking	House & Garden Access	Refreshments & Accessible Toilets	Equipment for Hire & other Information
<b>Sutton Lane Meadows, Chippenham Wiltshire</b> T: 01672 539167 <a href="http://www.nationaltrust.org.uk/sutton-lane-meadows">http://www.nationaltrust.org.uk/sutton-lane-meadows</a>			
Limited Lay-by parking in Sutton Lane	Two are designated sites of Special Specific Interest. Green-winged and southern marsh orchids.	None at the meadow.	Dogs on leads are welcome.  Occasionally livestock are grazing.
Open: All year round – dawn till dusk.			

Car Parking	House & Garden Access	Refreshments & Accessible Toilets	Equipment for Hire & other Information
<b>Westonbirt Arboretum, Tetbury, GL8 8QS</b> T: 01666 880220 <a href="http://www.forestry.gov.uk">www.forestry.gov.uk</a>			
Inform staff who will direct you to the car park near the arena entrance.	Good accessibility on hard paths.  Trails off the paths can be difficult – caution if wet.  Advise against using 3 wheel scooters.	Accessible Courtyard Café and Restaurant.  Accessible toilet in welcome building.  Changing facilities including ceiling hoist, near Great Oak Hall.	Free loan of scooters and wheelchairs 0300 067 4861  Concession for disabled visitor, carer free.  Assistance dogs welcome.
Open: 9am-5pm every day except Christmas Day			

Car Parking	House & Garden Access	Refreshments & Accessible Toilets	Equipment for Hire & other Information
<b>Wildfowl and Wetlands Trust, Slimbridge, Glos GL2 7BT</b> T: 01453 891900 <a href="http://www.wwt.org.uk">www.wwt.org.uk</a>			
Car park with 17 disabled bays.	All buildings and most hides are step free.  Main routes - level access, ramps and hard surfaced paths with tarmac.  Accessible Land Rover safari.	Restaurant & snack Kiosk - both accessible.  6 accessible toilets available.	Wheelchairs and scooters available to hire with £5 donation  Hearing induction loop.  Assistance dogs allowed.  Enlarged maps.
Open: Daily 9.30am – 5.30pm April – October, 9.30am – 5.00pm November – March. Closed Christmas Day.			

Car Parking	House & Garden Access	Refreshments & Accessible Toilets	Equipment for Hire & other Information
<b>Whitehall Garden Centre, Lacock, Chippenham SN15 2LZ</b> T: 01249 730204 <a href="http://www.whitehallgardencentre.co.uk">www.whitehallgardencentre.co.uk</a>			
45 metres to the entrance which has one step.	There are ramped alternative routes to all areas.  Accessible grounds.  Some steep areas.	Restaurant is accessible for wheelchair users.  Accessible toilets in the shop area.	Wheelchairs available to hire.  Assistance dogs allowed.
Open: Opening hours vary. Check website or phone for more information.			

Car Parking	House & Garden Access	Refreshments & Accessible Toilets	Equipment for Hire & other Information
<b>Winchester Cathedral, Winchester, Hampshire SO23 9LS</b> T: 01962 857200 <a href="http://www.winchester-cathedral.org.uk">www.winchester-cathedral.org.uk</a>			
Parking in Winchester.  Disabled people may be dropped off in the Inner Close – phone in advance.	The ground floor is accessible.  Access to upper floor by chair lift. The Inner and Outer Close are accessible.  The Dean Garnier Garden has steps and a rail.	The Refectory in the Visitor's Centre is accessible.  Accessible toilets are in the Visitors Centre adjacent to the Cathedral.	T – Loop. Braille guide.  Touch and hearing facility  Sensory trail for pre-booked groups
Open: All year Monday–Saturday 9.30am–5pm, Sunday 12.30–3pm Services and events may affect this – telephone for more information.			

Car Parking	House & Garden Access	Refreshments & Accessible Toilets	Equipment for Hire & other Information
<b>Wilton House, Wilton, Salisbury SP2 0BJ</b> T: 01722 746714 <a href="http://www.wiltonhouse.co.uk">www.wiltonhouse.co.uk</a>			
Disabled car – parking and dropping off point near the entrance.	Stairs to enter. Lifts and an easy access route.  Gravel paths to be negotiated – recommend wheelchairs users bring assisting companion	Accessible fully licensed self-service Restaurant in the Old Riding School.  Accessible toilets in the Old Riding School.	Manual wheelchairs for hire.  Induction loop in film theatre.  Free admission to the carer of a disabled person.  Assistance dogs  Large print guide.
Open: April – September, Sunday – Thursdays and Bank Holidays, House:11.30am –5.00pm, Grounds:11am –5.30pm, Exhibition:11.30–5pm			

Car Parking	House & Garden Access	Refreshments & Accessible Toilets	Equipment for Hire & other Information
<b>The West Somerset Railway, Minehead, Somerset TA24 5BG</b> T: 01643 704996 <a href="http://www.west-somerset-railway.co.uk">www.west-somerset-railway.co.uk</a>			
Car parks at stations.	The Guards van has access via ramp & non slip flooring.  Normal carriages are not wheelchair accessible. 3 adapted carriages can be pre-booked.  No easy access at Doniford Halt.	Facilities vary by Station.  Some shops and cafes are accessible.  Accessible toilets available: Bishops Lydeard Crowcombe Healthfield, Stogumber, Watchet, and Minehead	Concession fares for the disabled & carer.  Assistance dogs welcome.
Open: All year – see the timetable on their website.			

Car Parking	House & Garden Access	Refreshments & Accessible Toilets	Equipment for Hire & other Information
<b>Wilton Shopping Village, Wilton, Salisbury SP2 0RS</b> T: 01722 741211 <a href="http://www.wiltonshoppingvillage.co.uk">www.wiltonshoppingvillage.co.uk</a>			
Disabled parking in coach park at A36 entrance.	Ramps to the shops if there is a step.  Accessible grounds with seating in the square and courtyard.	Restaurant in Woollen Mill shop on first floor accessible by lift.  Accessible toilets are on ground floor of Shopping Mall.	Wheelchair to hire free of charge.  Assistance dogs
Open: Monday – Saturday 9.30am – 5.30pm, Sunday 10.30am – 4.30pm			

Car Parking	House & Garden Access	Refreshments & Accessible Toilets	Equipment for Hire & other Information
<b>Wells Cathedral, Wells, Somerset BA5 2UE</b> T: 01749 674483 <a href="http://www.wellscathedral.org.uk">www.wellscathedral.org.uk</a>			
Disabled parking is available at Cathedral Green car park.	All of the ground floor is accessible.	Café.  Adapted toilets.	One wheelchair to hire.  Assistance dogs  Loop system for services & events  Guided tours available in advance.
Open: April–Sept 7am–7pm, Oct–March 7am–6pm			

Car Parking	House & Garden Access	Refreshments & Accessible Toilets	Equipment for Hire & other Information
<b>Tintinhull Gardens, near Yeovil, Somerset BA22 8PZ</b> T: 01935 823289 <a href="http://www.nationaltrust.org.uk">www.nationaltrust.org.uk</a>			
Separate mobility parking and drop off point 5 yards away.	Building – level entrance.  Grounds – accessible with care.  Woodland + Orchard – not accessible.	Small tea room.  Mobility toilet available.	One wheelchair to borrow.  Braille guide.
Open: Opening times vary – see website or phone for more information.			

Car Parking	House & Garden Access	Refreshments & Accessible Toilets	Equipment for Hire & other Information
<b>Barrington Court, Ilminster, Somerset TA19 0NQ</b> T: 01460 241938 <a href="http://www.nationaltrust.org.uk">www.nationaltrust.org.uk</a>			
Car Park 30 yards with disabled parking & drop off point.	Step to entrance, ground floor is accessible with route, stairs to other floors.	Tea Room & Restaurant.  Adapted toilet in Strode House, near shop.  No accessible toilets at reception.	3 wheelchairs available to hire.  6 seater buggy from car park.
Open: Nov, Dec & January Saturday & Sunday Mid February to October open 7 days a week.			

Car Parking	House & Garden Access	Refreshments & Accessible Toilets	Equipment for Hire & other Information
<b>Bath Abbey, Bath BA1 1LT</b> T: 01225 422462 <a href="http://www.bathabbey.org">www.bathabbey.org</a>			
York Street for nearest disabled parking.  Northgate & Southgate Parking also.	The Abbey is accessible except for the Tower tours.	Accessible shop.  Disabled toilet.	Wheelchair to book in advance 01225 303328  Assistance dogs are welcome.
Open: 9:30am-5:30pm Mon-Sat Sunday – 1pm-2:30pm and 4:30pm-5:30pm			

Car Parking	House & Garden Access	Refreshments & Accessible Toilets	Equipment for Hire & other Information
<b>Cotswold Wildlife Park, Oxfordshire OX18 4JP</b> T: 01993 823006 <a href="http://www.cotswoldwildlifepark.co.uk/">www.cotswoldwildlifepark.co.uk/</a>			
Large free car park with disabled spaces	Flat site with wide paths and numerous benches.  All enclosures have windows at wheelchair height.	Accessible toilets located by the Leopards, in the Restaurant, by the Reptile Courtyard and by the Gift Shop.  Changing facilities in the Manor House and by the Gift Shop.  Oaktree Restaurant.	Free wheelchair hire.  Wheelchair hire £10 a day. Must be booked in advance.  There is room for two wheelchairs on the train, and there are no steps.
Open: 10am – 5pm			

Car Parking	House & Garden Access	Refreshments & Accessible Toilets	Equipment for Hire & other Information
<b>Wiltshire Museum, Devizes, SN10 1NS</b> T: 01380 727369 <a href="http://www.wiltshiremuseum.org.uk">www.wiltshiremuseum.org.uk</a>			
Blue Badge space at front of museum, limited car parking to rear with reserved Blue Badge space.	Level access entrance, lift to 4 main floors with some ramped steps.	No café, but refreshments can be booked in advance or made available on request.  Accessible toilet on ground floor.	Hearing loop in lecture room.  Tours for special groups and handling sessions can be arranged in advance.  Assistance dogs welcome.
Open: Monday - Saturday - 10am to 5pm. Sundays - 12 noon to 4pm			

Car Parking	House & Garden Access	Refreshments & Accessible Toilets	Equipment for Hire & other Information
<b>Arundells, Salisbury, SP1 2EN</b> T: 01722 326546 <a href="http://www.arundells.org.uk/">www.arundells.org.uk/</a>			
No parking available.	The garden is level and accessible to all.  A ramp is provided for wheelchair access to the ground floor, but the upper landing is not accessible to wheelchair users.	Accessible toilets are available in an adjoining building.	Guide dogs welcome.
Open: Saturdays, Sundays, Mondays and Tuesdays 11am to 5pm			

Car Parking	House & Garden Access	Refreshments & Accessible Toilets	Equipment for Hire & other Information
<b>The Rifles Berkshire and Wiltshire Museum, Salisbury, SP1 2EX</b> T: 01722 419419 <a href="http://www.thewardrobe.org.uk/">www.thewardrobe.org.uk/</a>			
One parking space is available in our private car for disabled visitors.  Please display your Blue Badge prominently.	The Museum is on the ground floor and is fully accessible by wheelchair.	There is an accessible toilet available.  Bernières Tea Room	No sound or visual guides are available for visitors with visual or aural impairments.
Open: 10:00am - 5:00pm. Closed Sundays and through Dec/Jan			

Car Parking	House & Garden Access	Refreshments & Accessible Toilets	Equipment for Hire & other Information
<b>Go Ape, Forest Of Dean</b> T: 0333 331 5995 <a href="http://www.goape.co.uk/">www.goape.co.uk/</a>			
£3.50 all day parking	See website or phone for details	See website or phone for details	Please phone in advance to discuss individual needs for: *Deaf participants *Visually impaired participants *Participants with learning difficulties *Participants with mental health problems *Amputees
Open: See website or phone for details			

Car Parking	House & Garden Access	Refreshments & Accessible Toilets	Equipment for Hire & other Information
<b>Mompesson House, Salisbury SP1 2EL</b> T: 01722 335659 <a href="http://www.nationaltrust.org.uk">www.nationaltrust.org.uk</a>			
No parking, but drop off point available.	Steps to entrance, but level access via alternative route.  Ground floor accessible.  Level access to tearoom and garden.	Light lunches, locally baked scones, cakes and teas served in the garden tea-room	Wheelchair available to borrow  Braille guides  Large print guides  Induction loop
Open: 11am – 5pm			

Car Parking	House & Garden Access	Refreshments & Accessible Toilets	Equipment for Hire & other Information
<b>Westwood Manor, Bradford on Avon, BA15 2AF</b> T: 01225 863374 <a href="http://www.nationaltrust.org.uk">www.nationaltrust.org.uk</a>			
Mobility car park and drop-off point.	Ramp available. Advisable to phone ahead.  Ground floor and gardens accessible. No access to first floor.	No refreshments or toilets on site.  Nearby accessible toilets at the Westwood Parish Rooms.	Braille guide  Large print guide
Open: Tues, Weds and Sunday 2pm – 5pm			

Car Parking	House & Garden Access	Refreshments & Accessible Toilets	Equipment for Hire & other Information
<b>Salisbury Museum, Salisbury SP1 2EN</b> T: 01722 332151 <a href="http://www.salisburymuseum.org.uk">www.salisburymuseum.org.uk</a>			
Parking available for orange or blue badge holders.  Spaces can be reserved if booked in advance.	There is level access through the ground floor to the shop, galleries, coffee shop, toilets and lecture hall.  No lift to first floor.	King's House Café  Accessible toilets located near coffee shop	Wheelchair can be booked in advance.  Induction loop in lecture hall.  BSL trained staff possible but not guaranteed.  Large print brochures available on request.
Open: Mon – Sat 10am to 5pm			

Car Parking	House & Garden Access	Refreshments & Accessible Toilets	Equipment for Hire & other Information
<b>Monkey World, Longthorns, Wareham, Dorset BH20 6HH</b> T: 01929 462537 <a href="http://www.monkeyworld.org">www.monkeyworld.org</a>			
Several disabled bays on a first come first served basis.	Fully accessible apart from the Woodland Walk. There are no primate enclosures along the walk.  Guide dogs are allowed everywhere except the lemur enclosure.	Accessible toilets at the main entrance and the gibbon enclosure.	Wheelchairs and scooters are available. Recommended to book in advance.  Sensory statues of primates available.  Wheelchair swings are in both play areas.
Every day except Christmas Day. 10am – 5pm			